



## *Society of Mountain Artists inc.*

Featuring the Works of Artists from the Blue Mountains in New South Wales, Australia

May 2021 **Newsletter**

Issue No. 346

Mail P.O. Box 76 Wentworth Falls 2782—Email [secretary@mountainartists.org](mailto:secretary@mountainartists.org)  
Monthly Meetings at Wentworth Falls School of Arts Theatre Great Western Hwy Wentworth Falls  
Website / Gallery [www.mountainartists.org](http://www.mountainartists.org)

### **Management Committee**

<i>President</i>	<i>Peter Ayres</i>	<i>4758 9005</i>	<i>Committee Member</i>	<i>Helen Keegan</i>	<i>4757 3549</i>
<i>Vice Pres</i>	<i>Anna Marshall</i>	<i>4784 1148</i>	<i>Committee Member</i>	<i>Dennis West</i>	<i>4757 3135</i>
<i>Secretary</i>	<i>Par Carruthers</i>	<i>4758 7172</i>	<i>Committee Member</i>	<i>Geoff Tonge</i>	<i>0405 625 393</i>
<i>Treasurer</i>	<i>Tania Joscelyne</i>	<i>0425 263 165</i>	<i>Committee Member</i>	<i>Coral Jones</i>	<i>4758 6563</i>
<i>Facebook</i>	<i>Maryanne Bell</i>	<i>4758 9705</i>	<i>Committee Member</i>	<i>Fred Blakers</i>	<i>4751 6359</i>
<i>Patron:</i>	<i>John Wilson</i>		<i>Editor / Membership Records; Fred Blakers <a href="mailto:alfie-b@bigpond.com">alfie-b@bigpond.com</a></i>		
<i>Website</i>	<i>John Finnerty</i>	<i>4757 4324</i>	<i>Newsletter Articles required by 2nd Monday of month</i>		

### **SMA NEWSLETTER May 2021 .Presidents message**

This month at last we will be returning to the front hall of the Wentworth Falls School of Arts on the Gwhighway.this means we will be able to restore morning tea and our library so if you still have library books please be sure to return them to our librarian Maunie as there area still a number of them out on loan.

David Newman White has confirmed that he will be coming to give a demonstration at our meeting on Thursday to do a portrait of a volunteer member.The members choice at this meeting will be 'clouds'

Dennis West has kindly to give us a watercolour at the meeting on 17 June; members choice sublect will be 'pets'and Dario Falzon will return the following month at the Thursday15 meeting when the members choice topic will be 'Still life'.

The final plein air venue on Thursday 27 June will be to Dry Ridge winery at 226 Aspinal Rd [off the Six Foot Track] on the right just over Megalong Ck . Hopefully we can also have lunch at the Megalong tea shop afterwards.

Further plein air trips will be halted then until warmer weather returns but in the interim we will make gallery excursions to the city. To include the Archibald, Wynne and Sulman prize exhibitions.

Please access the SMA website for all the details and entry forms for our exhibition at Glenbrook hall adjacent to the cinema from Friday. The4 June until Sunday the 6 th.

If you are interested in going to the mid year luncheon at Katoomba RSL on thursday 22 July the sheet for your names will be out the front for the last time today as I must confirm the provisional booking made asap now.

Look forward to seeing you all and some kind of normality I hope.

All the best

Peter

## **Exhibition News.**

**Australian Maritime Museum** Darling Harbour.

**Wildlife Photographer of the Year** until 31st October 2021

**SH Ervin Gallery National Trust** Tuesday-Sunday: 11am-5pm Closed Mondays & Public Holidays Watson Road, Observatory Hill The Rocks (enter via Argyle Street)

**Salon de Refuses for Archibald / Wynne/ Sulman** 30 May 5 August

**Tree of Life** is an exhibition by indigenous and non-indigenous Australian artists who are concerned for the environment and natural world, and understand deep spiritual & physical associations connect all forms of life.

**Art Gallery of New South Wales**

**Archibald / Wynne/ Sulman** Open 5th June until 26 September

**A Century of Archibald** Opens 5th June

**Kilma af Kiimt** 'The Secret Paintings' Opens 12th June

**Longing for Home**" until 22 Aug presents works by six Aboriginal artists from across mainland Australia who have documented their melancholic longing for Country, and how that emotion is characterised by both yearning and distance, time and space.

**National 2021 New Australian Art**

Staged concurrently at three of Sydney's premiere cultural institutions – the Art Gallery of NSW, Carriageworks and the Museum of Contemporary Art – *The National 2021: New Australian Art* presents 39 emerging, mid-career and established Australian artists, collectives and collaboratives working in a diverse range of media across the country and overseas.

The exhibition at the Gallery, co-curated by Matt Cox and Erin Vink, presents 14 artist projects

**Hawkesbury Gallery** Deerubin Centre George St Windsor

**Promiscuous Provenance** until 3 June

**Nepean Gallery** River Rd Emu Plains

**Bird Pettyarre and Middlebrook** until 13 June

# Activities Diary

DATE	ACTIVITY	Location	Booking
May Thur 20th	Monthly Meeting Demonstration David Newman-White Members Choice Bring a Painting "Clouds"	1.00 pm Wentworth Falls School of Arts Back to Front Hall and Library Front Hall	No
May Thur 27th	Plein-air Painting Map Page 4	10am Dryridge Estate Winery 226 Aspinall Rd Megalong Valley	No
May Friday 28th	Closing Date for Exhibition Entries	May be done On Line up to this date	
June Thur 3rd	Paint Together Group	10am St. Andrews Presbyterian Church Hall Falls Rd Wentworth Falls	\$5
June Sat 5th / Sun 6th	June Art Exhibition	Glenbrook Theatre Hall	
June Thurs 17th	Monthly Meeting Demonstration Dennis West Water Colour Members Choice Bring a Painting "Pets"	1.00 pm Wentworth Falls School of Arts Back to Front Hall and Library Front Hall	No
June Sat 12th	Workshop Owen Thompson	St. Andrews Presbyterian Church Hall Falls Rd Wentworth Falls \$30 5 hours	Yes
July Thurs 1st	Paint Together Group	10am St. Andrews Presbyterian Church Hall Falls Rd Wentworth Falls	\$5
July Thurs 15th	Monthly Meeting Demonstration "Dario Falzon" Landscape Members Choice Bring a Painting "Jamison Award" See Page 5	1.00 pm Wentworth Falls School of Arts Back to Front Hall and Library Front Hall	No
July Thurs 22nd	Mid Year Luncheon	Katoomba RSL Details to come Booking List at May Meeting	Yes
Aug Thurs 5th	Paint Together Group	10am St. Andrews Presbyterian Church Hall Falls Rd Wentworth Falls	\$5
Aug Thur 19th	Monthly Meeting Demonstration "Robyn Collier" Members Choice Bring a Painting Theme "Still Life"	1.00 pm Wentworth Falls School of Arts Back to Front Hall and Library Front Hall	No  3

## Plein-air Painting Thursday 27th May



### Directions from Blackheath

From Blackheath, the journey to the valley and Dryridge is very special. The Megalong Road winds down from the escarpment through a canyon of native rainforest with spectacular views from beneath the ridge. It's shady and sheltered here and the flora is a complete contrast to the valley floor eucalypt forests. Tree ferns line the narrow winding road and Satin Bower Birds can often be seen running across the road.

**Turn from the Great Western Highway over the railway track at the Blackheath traffic lights. Crossing the rail line, turn immediately left and then first right into Shipley Road. Approximately one kilometer down Shipley Road take the sharp downhill turn to the left onto Megalong Valley Road - this turn is easy to miss.**

**Drive down Megalong Road through the rain forest to the valley floor, past the Megalong Tearooms and Peach Tree Road on the right. Later you will pass the Megalong School on the left and two small churches on the right.**

**Cross the Megalong Stream causeway and continue 500 metres, turning right off the main road at Aspinal Road and the Dryridge Estate signs - the sealed road ends just past this point.**

**The road to Dryridge Estate meanders for 2.2 kilometres - the vineyard and the homestead are visible half way along. Ignore turns to the left to other properties. A sign marks the entrance to the vineyard and the Dryridge entrance road is signposted at the top of the ridge, 300 metres past a pump house on your right.**

## *Jamison Award July Meeting*

Each year we hold the Award which is acquisitive judged by peer acclaim. The painting then becomes the Raffle Prize for the Spring Exhibition

**If you wish to take part bring a painting to the July meeting.**

Members vote on which they think is the most suitable.

The Society will reimburse or pay for the cost of framing.

The painting may be any medium  
Must be the original work of the artist.  
Not a copy or done as part of a workshop



## *Mid Year Luncheon*

Is Planned for Thursday July 22nd

Katoomba RSL

Details TBA

Booking List at May Monthly Meeting



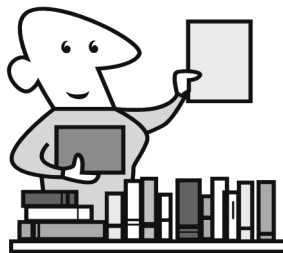


### Notes from Management

**Glenbrook Exhibition.** Announce at the May General meeting that Coral will be available to pick up and transport paintings to Glenbrook from the School of Arts car park Wentworth Falls at 10 am. Friday 4<sup>th</sup> June. Entry fees to be correct in sealed envelope attached to paintings. All details on envelope. No change given. **Preferred direct debit** to Society's bank account. Details on Entry Forms. Coral will bring painting back to W/Falls car park, Sunday. (**Time to be decided?**) or to next general meeting.

Remind members closing date for exhibition entries 28<sup>th</sup> May

**Please Note the Library** will recommence at May Meeting. Check if you have any outstanding Books DVDs etc they Need to be returned to the Return Box on Thursday.



**Afternoon Teas** have been unable to restart due to Covid. We will start again this meeting. Some more help will be required as we do begin.

