



Society of Mountain Artists inc.

Featuring the Works of Artists from the Blue Mountains in New South Wales, Australia

May 2018

Newsletter

Issue No. 327

Mail P.O. Box 76 Wentworth Falls 2782—Email secretary@mountainartists.org
Monthly Meetings at Wentworth Falls School of Arts Great Western Hwy Wentworth Falls
Website / Gallery www.mountainartists.org

Management Committee

President Peter Ayres 4758 9005
Vice-President Lia Johnston 4782 4408
Secretary Pat Carruthers 4758 7172
Treasurer Ron Anderson 4757 2423

Committee Member Anna Marshall
Committee Member Marie Morris
Committee Member Coral Jones
Committee Member Vacant
Committee Member Fred Blakers 4751 6359

Patron: John Wilson FRAS

Membership / Web John Finnerty 4757 4324
Records johnsfinnerty@gmail.com

Editor: Alfred (Fred) Blakers 4751 6359 alfie-b@bigpond.com
Articles required by 2nd Monday of month

President's Message

Firstly many thanks to everyone who contributed to the Autumn exhibition at St Albans church hall in Leura. Although it is not a high profile destination we were fortunate that the church allowed us to have it after Council reneged on our booking of the old library site in Katoomba. Total sales of paintings and cards yielded just over \$3000 commission for the Society and raffle results for the John Wilson painting were over \$1000 ;about 50%of which came from pre exhibition sales. The hanging of unframed work alongside framed paintings filled the screens very successfully. NOTE that the exhibition sub committee have recommended that paintings submitted for the monthly members choice WILL be eligible for the Spring exhibition.

Due to apologies from many members the much depleted management committee met early in May. The proposed holiday to Kiama in late October has been revisited due to demand for accommodation in Late October and other options are being explored. The May plein air to Woodford academy has been cancelled as the committee there have asked for a \$50 fee-apparently to clean the toilets !! The June plein air outing is to Wendy Whitley's garden at Lavender Bay ,North. Sydney [details in newsletter Page 4] and possibly to AGNSW if the weather is adverse for a garden visit .

The mid year luncheon venue has changed as the Avalon is not open weekdays for lunch; We are exploring the Waldorf Hotel opposite the Fairways instead.

The demonstration programme for the rest of the year is now almost full with Donald McClean this month and Dennis West how to do figures in June. Please note to bring a painting for the members choice Jamison Award to the July meeting this, will be the raffle prize for the Spring exhibition.

Given the interest in the members choice at monthly meetings future subjects will be June –reflections; July– Jamison Award; August –clouds; September –animals /pets /insects; October- birds; November -maritime subjects.

Stay warm –great excuse to be indoors painting

Peter Ayres

New management committee

Peter Ayres President * Lia Johnston Vice-president * Pat Carruthers Secretary * Ron Anderson Treasurer.
Committee Members Marie Morris, Anna Marshall, Coral Jones, Fred Blakers. One Vacant Position

Sub Committees must be appointed by Management Committee. Previously this was done at the first Management Meeting after the AGM. This can hinder the smooth running of organised activities while waiting for any changes to appointments.. Management decided that in future Sub-committee will be appointed April to April. To help with smooth planning .

Exhibition Sub-committee

Lia Johnston, Heather Skarratt, Marie Morris, Maunie Kwok, Rhys Jones .Gordon Wright and Marilyn Ecob

Web Sub-committee

John Finnerty, Fred blakers, Maryanne Bell

Publicity Geoff Tonge

Library Maunie Kwok, Valerie Craven

Meeting Teas. Dixie Willmott, Mara Jordan.

Social Activies. Irene Miller, Mave Roberts,
Jenny Ross Brown

Newsletter, Public Officer Fred Blakers

Membership . John Finnerty

Addition Members / Helpers may be co-opted as required

Thanks to Esther McFarlane for her help but who has decided to resign from the Management Committee.. This leaves a vacancy on the Committee

Jenny Ross Brown has resigned from the Exhibition Sub Committee but will still help with Social Activities.

Gordon Wright and Marilyn Ecob have joined the Exhibition Sub Committee

STILL IN THE PIPELINE

The manage Committee and sub- committees are busy planning the rest of the Year Activities

Some details are still to be finalised. Your input is always helpful.

Saturday Workshops. Booking have been made for Saturday 8th September and 24th November.
Topics still to be organised.

Mid-year Lunch in June of July venue being investigated.

Annual Holiday. 5 days in last week or two of October Often in the higher cost bracket

SO maybe early September Suggestions? –

Bulli (caravan park) Kangaroo Valley (cabins) Rylestone/Kandos (old hotel Kandos)

Umina/Ocean beach (caravan park) Consideration to transport needs.



Spring Exhibition. Venue is again Leura Fairways 28th Sept to 7th October

Plein-air Painting in the Gardens is again possible but some days are to be finalised

Christmas Luncheon November or December.

Activities Diary

Management Committee Meeting 4th June 2018 1pm Wentworth falls Country Club
 Exhibition Sub-committee Meeting 4th June 2018 10am Wentworth Falls Country Club

DATE	ACTIVITY	Location	Booking
May Thurs 17th	Monthly Meeting Demonstration Artwork Donald Mc Lean	1.00 pm Wentworth Falls School of Arts Members Choice Theme "Buildings"	NO
May Thu 24th	Plein Air Painting	Deferred	NO
June Thur 7th	Paint Together & Morning Cuppa	10am St. Andrews Presbyterian Church Hall Falls Rd Wentworth Falls	\$5 cost
June Thur 21st	Monthly Meeting Demonstration Dennis West Demonstration "Figures in your Paintings"	1.00 pm Wentworth Falls School of Arts Members Choice Theme "Reflections"	NO
June Thur 28th	Plein Air Painting Wendy Whitley's Garden	Details Page 4	NO
July Thur 5th	Paint Together & Morning Cuppa	10am St. Andrews Presbyterian Church Hall Falls Rd Wentworth Falls	\$5 cost
July Saturday 7th	Workshop Details to be Advised	St. Andrews Presbyterian Church Hall Falls Rd Wentworth Falls	
July Thur 19th	Monthly Meeting David Newman-White Pastels	1.00 pm Wentworth Falls School of Arts 'Jamison Award' See Page 6	NO
July Thur 26th	Plein Air Painting trip	NSW Art Gallery	
Aug Thur 2nd	Paint Together & Morning Cuppa	10am St. Andrews Presbyterian Church Hall Falls Rd Wentworth Falls	\$5 cost
Aug Thur 16th	Monthly Meeting Demonstration Maja Meinhardt	1.00 pm Wentworth Falls School of Arts Members Choice Theme "Clouds"	NO
Aug Thur 24th	Plein Air Painting Trip	Maritime Museum, and Chinese Garden.	
Sept Saturday 8th	Workshop Details to be Advised	St. Andrews Presbyterian Church Hall Falls Rd Wentworth Falls	
Nov Saturday 3rd	Workshop Details to be Advised	St. Andrews Presbyterian Church Hall Falls Rd Wentworth Falls	

Exhibition Calendar

BMCC Cultural centre, Katoomba; 'Mary Alice Evatt-art for the people' until 4 June

Light and Shadow gallery Grose St Leura; Fine Art photography including work by Max Dupain.
Open Wed to Sunday 10am til 4pm

Gallery one 88 Katoomba st ,Katoomba; ' Three journeys,one destination 'featuring three SMA members work until 20 May

'The Rivers Path'; paintings by Nicole Foxall and 'Cultivate' paintings by Wendy Tsai. Both open on 26 May

Australian Maritime museum ,Darling Harbour; Wildlife photographer of the Year from the Natural History museum London.

'Container- the Box that changed the World' Wharf 7 courtyard

AGNSW Sydney; The Archibald, Wynne and Sulman prizes 2018 ;finshes 9 September.

'The Lady and the Unicorn' Early French tapestries; until 24 June

SH Ervin Gallery Observatory Hill Sydney ; Salon des Refuses-the alternate Archibald, Wynne and Sulman prize selection until 29 July [closed Tuesdays]

- **Wendy Whitley's garden (city by train 7.55 ex Mt Victoria. Then train to Milsons Point. Walk 15 mins to Gardens.** Lunch Kirribilli.) If raining visit NSWAG

The garden hides amongst the Lavender Bay Parklands, which are an attractive part of Sydney Harbour– with lovely views, and, as many visitors say – a special feeling of peace and tranquillity.

- At the moment there aren't any sign posts which show directions to the garden. Best thing to do is track Wendy's Garden Lavender Bay from Google Maps.

Lavender Bay is part of the Lower North Shore suburbs some 3 klms north of the Sydney CBD. Located in Lavender Street, Lavender Bay, the Parklands are a 5 to 10-minute walk from North Sydney or **Milsons Point railway stations** Adjacent to the garden in Harbourview Crescent is the [Kirribilli Club](#) where food, beverages and parking are available.

Garden is steep but has seating areas where you could sketch or photograph.

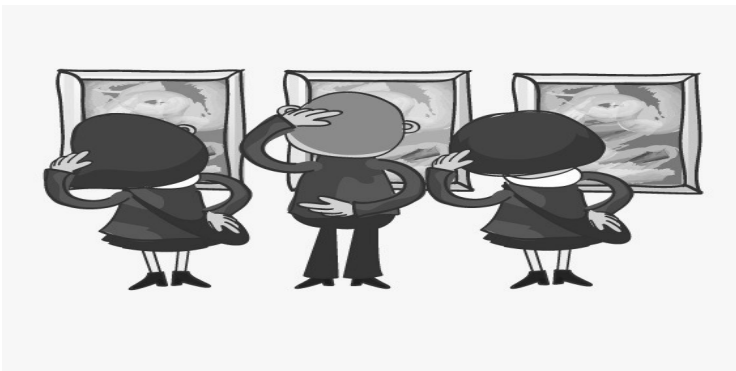
Welcome New Members

John Fox Bullaburra
Lida Szubunia Katoomba



MEMBERS' CHOICE

If you read Peter's President Report you will have seen mention of Themed mini-exhibitions at the Monthly Meetings.



Started in April we trialled a themed painting award at monthly meetings; while it will not make you rich it will encourage you to show your work to colleagues and get some helpful and constructive feedback. This has been extended till the end of the year
June, Clouds .June –reflections; July– Jamison Award; August –clouds;
September –animals /pets /insects; October- birds; November -maritime subjects.

Members will vote for their CHOICE as the winning painting

Gift Voucher Award

Paintings entered in Monthly Themes are eligible for Main

The Apple as Modern Art
by **easyart**.com

Surrealism



Pop Art



Expressionism



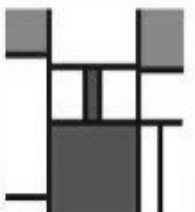
Minimalism



Cubism



De Stijl



Conceptual



This is not an apple.

Dada

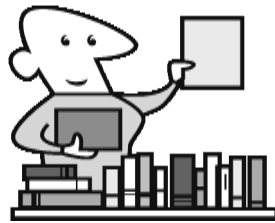


easyart.com/trends

Help the Environment

Some members are bringing their own cup or mug to the Meetings.

Saves the use of poly cups.



LIBRARY

Did you miss one of the previous meeting Demonstrations?

DVDs of most of the demonstrations are available in the Library for loan for members.

Check them out

Paint Together & Morning Cuppa

10am **St. Andrews** Presbyterian Church Hall Falls Rd Wentworth Falls

First Thursday of the Month

PLEASE NOTE

Because the odour from Turps causes discomfort to other members it is requested that members

use a non odour substitute eg.

Gamsol, Odourless Mineral Spirits, Baby Oil (does make Paints slower to dry,

Low Odour Turps (Still a slight smell)

Baby Wipes are great for cleaning off brushes

Jamison Award July Meeting

Each year we hold the Award which is acquisitive judged by peer acclaim. The painting then becomes the Raffle Prize for the Spring Exhibition

If you wish to take part bring a painting to the July meeting.

Members vote on which they think is the most suitable.

The Society will reimburse or pay for the cost of framing.

The painting may be any medium
Must be the original work of the artist.
Not a copy or done as part of a workshop