



# Society of Mountain Artists Inc.

Featuring the works of Artists from the Blue Mountains in New South Wales, Australia

**Apr 2016**

**NEWSLETTER**

**Issue No 304**

**Mail P.O. Box 76 Wentworth Falls 2782—Email [secretary@mountainartists.org](mailto:secretary@mountainartists.org)**

**Monthly Meetings at Wentworth Falls School of Arts Great Western Hwy Wentworth Falls**

**Website / Gallery [www.mountainartists.org](http://www.mountainartists.org)**

## *Management Committee*

<b>PRESIDENT</b>	Peter Ayres	4758 9005	<b>LIBRARIAN</b>	Maunie Kwok	4757 3550
<b>VICE-PRESENT</b>	Marie Morris	4787 1257	<b>ORDINARY MEMBER</b>	David Dodd	4757 1535
<b>SECRETARY</b>	Patricia Carruthers	4758 7172	<b>ORDINARY MEMBER</b>	Alfred Blakers	4751 6359
<b>TREASURER</b>	Nancy Dodd	4757 1535	<b>ORDINARY MEMBER</b>	Ann Warnes	
			<b>ORDINARY MEMBER</b>	Marlene Strathdee	4787 8681

## *Patron: John Wilson FRAS*

Membership / Web John Finnerty 4757 4324  
Records [jf Finnerty@bigpond.com](mailto:jf Finnerty@bigpond.com)

Editor: Alfred (Fred) Blakers 4751 6359 [alfie-b@bigpond.com](mailto:alfie-b@bigpond.com)  
Articles required by 2nd Monday of month

## *President's Message*

A big thank you to everyone who nominated for the management committee and exhibition and website sub committees. I would hazard at a guess that many of you wouldn't have much of an idea of what these committees actually do but I can assure you that without them the Society would rapidly cease to function and continue into the future.

Hopefully many of you will have entries in the Autumn exhibition at St Albans Leura but regardless I hope you will visit the show and even treat yourselves to a few raffle tickets. Anna Marshalls lovely floral painting is a worthy prize.

Please note that if you have not renewed your subscription to the Society you will cease to receive the newsletter either by mail or email.

Just in case you miss the April meeting this months newsletter contains the menu for the 30 th anniversary lunch at The Grand View WF. A list will be compiled of those wishing to attend and a \$20 deposit will be payable at or by the May members meeting so the booking can be confirmed. We also enclose a list of the demonstrator DVD's which Maunie has kindly compiled-these are available on loan from our library.

The April plein air excursion is to Mount Tomah botanic garden where hopefully autumn colours will be abundant. In May we will meet in the vicinity of the Comet/Collitts inns at Hartley. From June onwards on the Thursday plein air day we will propose excursions to the city to catch current exhibitions and perhaps even do some sketching.

The demonstration programme continues with watercolours by Joe Cartwright followed in May by Dennis West and in June by Ray Harrington Further on from that we are looking at Robyn Collier and a demonstration of encaustic wax techniques .

Thank you for your continued support

*Peter Ayres*

### ***30th Anniversary Exhibition***

To mark our 30th Anniversary in addition to the luncheon in June the Society has decided to have a 9x5 Exhibition as part of our Spring Exhibition. It will be hung and judged as a separate section.

Each exhibitor will be able to submit two paintings no entry charge.

The Society will organise matching white frames and mats. Any medium and support will be suitable.

We have obtained a very reasonable quote from local Hope Tree Framing 10 Station St Wentworth Falls. Cost \$56 per painting this includes fixing paintings in frames and attaching hanging cords. To be paid with Entry Form.

Minimum advertised price \$200 per painting.

Separate Entry Forms will be distributed by June Monthly Meeting

Paintings to be delivered at August Monthly Meeting to be forwarded to framer

### ***The usual conditions and entries will apply for the main Exhibition***

#### **A SHORT 9x5 HISTORY**

The **9 by 5 Impression Exhibition** was an art exhibition in Melbourne, Australia. The exhibition was opened on 17 August 1889 in Buxton's Rooms on Swanston Street and featured 183 works; the majority of which were painted by the Australian impressionists Tom Roberts, Charles Conder and Arthur Streeton. The exhibition was named for the dimensions of most of the paintings— 9 by 5 inches (23 cm × 13 cm), the size of a cigar box lid upon which many of the works were painted— and the Impressionist inspiration for the works.

The exhibition created much lively commentary at the time and is now seen as a "celebrated event in Australian art history". 9 by 5s continue to appear on the market; in 2009, Conder's *Centennial Choir at Sorrento* (cat. 151) sold at Sotheby's for A\$492,000. In 2012, to mark the 123rd anniversary of the exhibition, arts benefactor Max Carter donated four 9 by 5s (valued at over A\$3,000,000) to the Art Gallery of South Australia, the largest group of 9 by 5s ever given to an Australian public institution.

### ***Management Committee elected at AGM***

President	Peter Ayres
Vice President	Marie Morris
Secretary	Pat Carruthers
Treasurer	Nancy Dodd
Ordinary Committee Members	Fred Blakers (Editor)
	David Dodd
	Maunie Kwok (Librarian)
	Marleen Strathdee
	Ann Warnes

#### ***Appointed by Management***

Public Officer	Fred Blakers
Membership Records	John Finnerty
Publicity	Marie Morris

### ***Sub Committees as appointed by Management Committee***

<b>Exhibition</b>	Dennis West (Chair)	<b>Website</b>	Heather Skarratt
	Anna Marshall (Secretary)		Ron Anderson
	Maria Haren		Marg Beal
	Lia Johnston		Fred Blakers
	Maunie Kwok		John Finnerty
	Marie Morris		
	Ann Warnes		

# Activities Diary

Management Committee Meeting 2nd May 2016 1pm  
Exhibition Sub-committee Meeting 2nd May 10am Wentworth Falls Country Club

<b>April</b> Thur 21st	<b>Monthly Meeting</b> <b>Watercolour Demonstration Joe Cartwright</b>	1.00 pm Wentworth Falls School of Arts	NO
<b>April</b> Thur 28th	<b>Plein Air Painting (2)</b>	10am Mt Tomah Botanical Gardens	NO
<b>May</b> Thurs 5th	<b>Paint Together &amp; Morning Cuppa</b>	10am <b>St. Andrews</b> Presbyterian Church Hall Falls Rd Wentworth Falls	\$5 cost
<b>May</b> Tues 10th	<b>Plein Air Painting (1)</b>	Hartley Vale Comet Inn area	No
<b>May</b> Tues 17th	<b>Paint Together</b> <b>No Oils</b>	10am <b>Wentworth Falls Country Club</b> Blaxland Road Downstairs Meeting Room	Social Member ship
<b>May</b> Thur 19th	<b>Monthly Meeting</b> <b>Demonstration Dennis West</b>	1.00 pm Wentworth Falls School of Arts	NO
<b>May</b> Thur 26th	<b>Plein Air Painting (2)</b>	Hartley Vale Comet Inn area	No
<b>June</b> Thurs 2nd	<b>Paint Together &amp; Morning Cuppa</b>	10am <b>St. Andrews</b> Presbyterian Church Hall Falls Rd Wentworth Falls	\$5 cost
<b>June</b> Tues 14th	<b>City Gallery Trip</b>	Details to Come	No
<b>June</b> Thur 16th	<b>Monthly Meeting</b> <b>Demonstration Ray Harrington</b>	1.00 pm Wentworth Falls School of Arts	NO
<b>June</b> Tues 21st	<b>Paint Together</b> <b>No Oils</b>	10am <b>Wentworth Falls Country Club</b> Blaxland Road Downstairs Meeting Room	Social Member ship
<b>June</b> Thurs 30th	<b>30th Anniversary</b> <b>Luncheon</b>	Grand View Hotel Wentworth Falls <b>Details Below</b>	YES
<b>July</b> Thurs 7th	<b>Paint Together &amp; Morning Cuppa</b>	10am <b>St. Andrews</b> Presbyterian Church Hall Falls Rd Wentworth Falls	\$5 cost
29th Aug To Fri 2nd Sep	<b>Annual Holiday</b>	<b>Location and Details to be Decided</b>	

## 30th Anniversary Luncheon

Thurs 30th June  
Grand View Hotel  
Wentworth Falls



### Menu

#### Main Choice

Slow Cooked Lamb Shanks on Mash Potato with Gremolata (GF)  
Barramundi with Mash Potato & Tomato Olive Salsa (GF)

#### Dessert Choice

White Chocolate Pannacotta with Passionfruit & Coconut (GF)  
Salted Caramel Slice with Banana in Rum Syrup served with Ice-Cream

All Served with a Bread Roll

*Booking List at April meeting Deposit \$20 Full Price \$40 by May Meeting*

## Exhibition Calendar

**BM Cultural Centre Katoomba.** 'Map space' Contemporary artists from the Blue Mountains and Central west until 24 April

Robert Malherbe ;'Resist the spirit of the times 'the first 12 yrs of the artists career 3 April until 5 June .

**Hayley Manly Art Gallery;** 'Out of Quarantine' ,paintings prints and ceramics until 19 June

West 'Remnants of the dead and demands of the living' 9 April until 15 May.

**Lost Bear Gallery** ,Lurline st Katoomba. "Wild' an exhibition of works by Robyn Collier until 18 April.

**Scenic World Katoomba;** 'Sculpture 2016' until 8 May

**Everglades Garden Gallery Leura;** 'Fashioned by Nature' a peaceful stroll in the countryside through the eyes of Peter Wale, starts 3 April until 1 May

**Casula Powerhouse Arts Centre;** The 64 th Blake Art Prize until 24 April.

**RAS Walker Street N.Sydney;**'Stardust ,Painter ,Poet '-Edwin Wilson, a retrospective. Until 1 May

**AGNSW,Sydney.;**Art Express 2016 until 15 May.

Tang Treasures from the Silk Road capital until July 10

20<sup>TH</sup> Bicentennial of Sydney until June 5

**Lion Gate Lodge. Sydney botanic garden;** 'Botanica at Farm Cove' botanical artwork until 1 May.

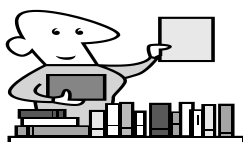
**Orange Regional Gallery'**Best in Show' Dogs in Australian Art

Until 3 July

**Gallery Blackheath** Govetts Leap Rd. Retrospective of Impressionist Works

by member *Ray Harrington FRAS*. Opens 5 March @ 2.30pm Continues until 1 May





# LIBRARY

## **DVDs – Demonstrations at SMA meetings are available for borrowing by members**

<u>Artist</u>	<u>Date of demo</u>
Joe Cartwright	18.4.2013
Ray Harrington	14.5.2013
David Newman-White	20.6.2013
Dennis West	18.6.2013
Julie Simmons	15.8.2013
Jody Graham	19.9.2013
Helen Hudson	15.5.2014
Ruth Dengate	16.10.2014
Julie Simmons	19.2.2015
Owen Thompson	21.5.2015
Rachel Szalay	18.6.2015
Maja Meinhardt	20.8.2015
Mischa Borowski	15.10.2015
Roland Hemmert	18.2.2016



## *Welcome New Member*

Neil Mitchell

Blaxland East



## ***Anglicare Winmalee Day Care Centre***

**A few SMA Members go once a month to run Art For the Elderly Activities at this Centre.**

*It may be of interest for members or friends who care for elderly relatives that the Centre is offering for those interested morning tea and a visit to enable people to see what is provided by the Centre.*

**WHEN** Any day Monday to Thursday

**WHERE** 364 Hawkesbury Rd Winmalee Local Transport can be provided

**RSVP** Monday to Thursday 4754 5841

Providing recreational activities and outings for frail older people

**News from the Website Sub-committee**

It was pleasing to have such a good response from the members at the Exhibition who asked for their exhibited paintings to be photographed to enable them to join the Gallery on the Website.



Keep your eye on the Site to see as these are processed and displayed.

**Website / Gallery [www.mountainartists.org](http://www.mountainartists.org)**

If Not Delivered Return to  
Society of Mountain Artists Inc.  
PO Box 76  
Wentworth Falls 2782