



Society of Mountain Artists Inc.

Featuring the works of Artists from the Blue Mountains in New South Wales, Australia

Apr 2015

NEWSLETTER

Issue No 293

Mail P.O. Box 76 Wentworth Falls 2782—Email secretary@mountainartists.org

Monthly Meetings at Wentworth Falls School of Arts Great Western Hwy Wentworth Falls

Website / Gallery www.mountainartists.org

Management Committee

PRESIDENT	Peter Ayres	4758 9005	LIBRARIAN	Maunie Kwok	4757 3550
VICE-PRESENT	Marie Morris	4787 1257	ORDINARY MEMBER	Ann Warnes	
SECRETARY	Lia Johnston	4782 4408	ORDINARY MEMBER	Alfred Blakers	4787 5870
TREASURER	Patricia Carruthers	4758 7172	ORDINARY MEMBER	Francis Lipscombe	
Assistant Treasurer	Marlene Strathdee	4787 8681			

Patron: John Wilson FRAS

Membership / Web John Finnerty 4757 4324
Records jfynnerty@bigpond.com

Editor: Alfred (Fred) Blakers 4787 5870 alfieb@eftel.net.au
Articles required by 2nd Monday of month

President's Message

Congratulations or commiserations to all those brave souls who put their hands up for the Management Committee and were duly re appointed at our AGM. The exhibition sub committee needs to be endorsed by the Management committee but so far those on the previous committee have agreed to continue and been busy finalising our Exhibition in Leura. Thanks to Fred Blakers who is stepping down as the Chair of that committee but will continue to edit the newsletter. Anyone who is interested in being a member of the exhibition committee or indeed helping in future should make it known asap.

This meeting coincides with our exhibition so thanks to those who are staffing it while the rest of us enjoy Jane Canfields demonstration . Hope everyone got their entries in and conformed to the entry criteria and that you all visit the show before it finishes on Saturday.

Please note that our May plein air will now be at Mt Tomah Botanic Garden where we will hopefully still see some Autumn colour. We decided against Yarramundi as there are no public toilet facilities although it is a lovely location. The May outing will be our last until Spring but we will be arranging other activities in lieu of plein air so keep an eye on the newsletter diary.

We will be taking bookings for a mid year luncheon at Secret Creek Lithgow on Thursday 23 July. This is a lovely venue which we have visited before and has recently been refurbished. Also at this meeting we will be taking expressions of interest for our annual painting holiday in late August /early September in the Mudgee/Gulgong area. This will need to be booked soon after the June meeting at the very latest and we have identified suitable accommodation options.

I am sure everyone joins me in wishing our Treasurer Patricia an enjoyable and well deserved overseas holiday from the end of April and in welcoming Marlene Strathdee who will deputise as Treasurer while Pat is away.

Have fun with your painting!!

Peter Ayres

Exhibition Calendar April 2015

Blue Mountains Cultural Centre Katoomba
John Caldwell 'Journeys' until 28 May
David Miiddlebrook 'Drawings from the Blue Mountains'
Until 10 May

Royal Botanic Gardens Sydney
Palm House; Marijke Greenway-'Colours of Australia' daily 10-5pm until 29 April.
Lion Gate Lodge; Mrs Macquaries Rd,' Botanica-The Birds and the Bees'
Daily 10 to 4pm until 10 May
Maiden Theatre; 'Margaret Flockton Award –Scientific Botanical Illustration'
Daily 10 to 4 pm until 10 May

AGNSW; 'The Photograph and Australia' until 9 June .
Evelyn Chapman; 'Mad Through Darkness; from 25 April
'Matisse and the Moderns' from 28 April

Hawkesbury Regional Gallery ,George St Windsor.
Laura Jones ,'Still Life' and David Lowery/Jaki Middleton 'Survey until 24 May
Australian Museum Sydney ; 'Wildlife Photographer of the Year' until 5 October

Autumn Exhibition

A couple of members raised a question about the conditions for the Autumn Exhibition.

Works should not have previously exhibited with the SMA.

This applies to all works to be exhibited as part of the exhibition. It does not necessarily apply to Unframed Paintings and Cards offered for sale at the exhibition.

Autumn Art Exhibition Parking

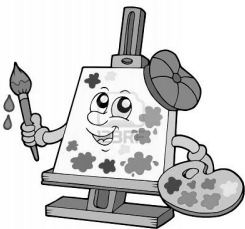
We are fortunate to be able to Hire the St Auburns Hall for the Autumn Exhibition.
As it is in the main business area of Leura which is a great asset.

The Church Committee does have conditions about car parking.

There is **NO PARKING IN THE CHURCH GROUNDS FOR DROP OFF OR PICKUP OF PAINTINGS**

There is ample parking in council parking area opposite or in the street

Members on duty may park at the rear of the Hall but **NO ONE ELSE**



Members wanting hands on activities and direction in their art are encouraged to attend the two monthly paint togethers on first Thursday and the third Tuesday of each month as advertised in the newsletter calendar. Experienced members are on hand to instruct and encourage when requested.

Further opportunities for developing competency in difficult conditions is watching experienced artists solve problems during plein air days and then having a go yourself.


All one has to do is let the member who you want to watch know and pick their brains.

All members attending plein air days need to sign in and out with the day supervisor who will make themselves known. This is to avoid leaving anyone behind, group safety, and insurance for anyone hurt. Ann Warnes volunteered



Activities Diary

Exhibition Sub-committee Meeting 4th April 10am Wentworth Falls Country Club
Management Committee Meeting 4th April 2015 1pm

Apr 14th—18th	 Autumn Exhibition	St Albans Hall in Leura Entry Form Attached in February Newsletter	
Apr Thurs 16th	MONTHLY MEETING Jane Canfield Demonstration	1.00 pm Wentworth Falls School of Arts	NO
Apr Tues 21st	Paint Together No Oils	10am Wentworth Falls Country Club Blaxland Road Downstairs Meeting Room	Social Mem- ber ship
Apr Thurs 23rd	Plein Air Painting	Mount York Lookout Mt Victoria Directions Page 4	NO
May Thurs 7th	Paint Together & Morning Cuppa	10am St. Andrews Presbyterian Church Hall Falls Rd Wentworth Falls	\$5 cost
May Tues 19th	Paint Together No Oils	10am Wentworth Falls Country Club Blaxland Road Downstairs Meeting Room	Social Mem- ber ship
May Thurs 21st	MONTHLY MEETING Owen Thompson Demonstration	1.00 pm Wentworth Falls School of Arts	NO
May Thurs 28th	Plein Air Painting	Mount Toma Botanical gardens	NO
June Thurs 4th	Paint Together & Morning Cuppa	10am St. Andrews Presbyterian Church Hall Falls Rd Wentworth Falls	\$5 cost
June Tues 16th	Paint Together No Oils	10am Wentworth Falls Country Club Blaxland Road Downstairs Meeting Room	Social Mem- ber ship
June Thurs 18th	MONTHLY MEETING Rachel Szalay Demonstration	1.00 pm Wentworth Falls School of Arts	NO
June Thurs 25th	Plein Air Painting Activity	Possible workshop	
July Thurs 2nd	Paint Together & Morning Cuppa	10am St. Andrews Presbyterian Church Hall Falls Rd Wentworth Falls	\$5 cost
July Thurs 16th	MONTHLY MEETING Maja Meinhof Watercolour Demonstration Jamison Award	1.00 pm Wentworth Falls School of Arts	NO
July Tues 21st	Paint Together No Oils	10am Wentworth Falls Country Club Blaxland Road Downstairs Meeting Room	Social Mem- ber ship
July Thurs 23rd	Mid-Year Luncheon	Venue Still to be Confirmed	
Aug Thurs 6th	Paint Together & Morning Cuppa	10am St. Andrews Presbyterian Church Hall Falls Rd Wentworth Falls	\$5 cost
Aug Tues 18th	Paint Together No Oils	10am Wentworth Falls Country Club Blaxland Road Downstairs Meeting Room	Social Mem- ber ship
Aug Thurs 20th	MONTHLY MEETING John Wilaon Demonstration Jamison Award	1.00 pm Wentworth Falls School of Arts	NO

**Plein-air Painting Thursday 23rd April Mount York Lookout
Mt Victoria**

On the north of the highway west of the centre of town is Mount York Road.
This road will take you to Mount York where you can see some of the original Cox's Road.
At Mount York Lookout you will be amazed to view the sheer drop to the Hartley Valley
which you can enter via a walking track which starts at this point.
You will also find a monument for several early explorers who arrived at this point.

If Not Delivered Return to
Society of Mountain Artists Inc.
PO Box 76
Wentworth Falls 2782