



Society of Mountain Artists Inc.

Featuring the works of Artists from the Blue Mountains in New South Wales, Australia

Sept 2013

NEWSLETTER

Issue No 276

Mail P.O. Box 76 Wentworth Falls 2782—Email secretary@mountainartists.org

Meetings at St Bonaventure's Church Hall Cnr. Hartley Espl & Railway Pde. Leura

Website / Gallery www.mountainartists.org

Management Committee

PRESIDENT	Vacant		ORDINARY MEMBER	Dennis West	4757 3135
VICE-PRESENT	Marie Morris	4787 1257	LIBRARIAN	Maunie Kwok	4757 3550
SECRETARY	Robyn Berglund	4782 5727	ORDINARY MEMBER	John Finnerty	4757 4324
TREASURER	Patricia Carruthers	4758 7172	ORDINARY MEMBER	Alfred Blakers	4787 5870
Assistant Treasurer	Marlene Strathdee		ORDINARY MEMBER	Peter Ayres	4758 9005

Patron: John Wilson FRAS

Membership / Web John Finnerty 4757 4324
Records jsfinnerty@bigpond.com

Editor: Alfred (Fred) Blakers 4787 5870 alfieb@efel.net.au
Articles required by 2nd Monday of month

Management Committee Report

Since I have the 'soapbox' again this month I am going to start by emphasizing that increasingly the Society continues to function and exist due to a FEW people doing more and more. The corollary of that is that most are doing very little or indeed, nothing, so time to step up and see what YOU can do for the Society not what it can do for you !!

The Turner Exhibition in Canberra was excellent and enjoyed by everyone. A smaller group who travelled to Sydney in lieu of a plein air day to see the Sydney Moderns at the AGNSW enjoyed a big exhibition full of surprises and delights. Do catch it before it closes and allow plenty of time.

Our first outdoor plein air of the summer season will be to Mount Tomah Botanic Gardens on Thursday September. Lots to see and paint but suggest you bring lunch or stop on the way back.

The proposed workshop helping members with their paintings has been moved to Saturday 2 November from 10am until 4pm at Wentworth Falls Golf Club [downstairs]. Bookings are for \$30 per person payable at or by the October meeting at the latest.

As the video collection is rarely borrowed now all of the remaining videos will be offered for sale to members at \$5 each and the proceeds reinvested in new DVD'S and books.

For those of you planning to paint in the gardens as part of the Leura Gardens Festival please note that the inspection day for 'DAVAAR' has been changed to Monday 23 September not as previously advised.

Last but not least OUR Spring exhibition is approaching and members can assist in many ways. Try getting a friendly local business you frequent to sponsor a screen at \$25 and or you can donate a small 6" x 4" artwork as a daily raffle prize.

Enjoy the lovely weather and get out there painting!

Peter Ayres

Jody Graham—demonstrator for the September meeting

Jody Graham is well known to many in the Blue Mountains where she was based until recently relocating to studio premises in St Peters, Sydney. She completed a diploma at the Billy Blue Graphic Art School and throughout the 90's worked in the graphic arts industry.

Her work is represented in many public and private collections nationally and internationally. Jody's work was selected for the Kedumba Award by John Olsen in 2003 and again in 2008 by Jenny Sages. She was a finalist in the Dobell Drawing Prize in 2004 and her work has also been include in the NSW Parliament Plein Air Prize, Adelaide Perry award and many other major art awards. Jody is much in demand as a teacher and demonstrator and the SMA is pleased to welcome her.

Jody Will be the Judge for the Society's Spring Exhibition

Exhibitions



Hunters Hill; 'The Romantics' art exhibition .Town Hall , Alexandra St, 14 -15 th September.

SH Ervin Gallery Observatory Hill. 'Windows to the Sacred; an exploration of the esoteric' 30 Aug until 29 Sept; then Portia Geach Memorial award-portraits by women artists 4 Oct until 17 November.

Hawkesbury Regional Gallery, Deerubin Centre,300 George St Windsor; ' Jasper Knight, a ten year survey' 2 August until 29 September.

Bathurst Regional Art Gallery; Archibald prize 2013.'From 30 August to 13 October

Australian Museum Sydney.' Wildlife Photographer of the Year' daily 0930 -5 until 7 October.

National Gallery of Victoria, Melbourne. 'Monet's Garden', Masterpieces from Musee Marmottan Monet ,Paris. Finishes 8 September.

'Australian impressionists in France' until 6 October

Art Gallery of NSW, Sydney. "Sydney Moderns-art for a new world 1914-1941". Opens 6 July til October 7 'Renaissance to Goya; prints and drawings from Spain' until 24 November. 'Still Life' Lowy Gonski gallery, ground level until 31 December.

An Exhibition of Watercolours by Esther McFarlane at Everglades Gallery 37 Everglades Avenue, Leura. from 5th to 27th October, 2013.featuring small works of Everglades Gardens including under snow; plus local and overseas landscapes and some still life paintings Gallery opening times 11am to-3pm each day during Garden Festival 5-13th Thence 11am to-3pm Wed. to Sunday till 27th October.2013. "Drinks with the Artist 2-4 pm on 13th October, 2013"



Leura Garden Plein Air Painting Competition

The Society has again been invited to paint in the Festival Gardens. Entry forms and Conditions will be available at the Sept Meeting.

The Committee has decided that as the money raised by the Garden Festival goes to support the Blue Mountains Hospital we will no longer accept a donation from the Festival Committee. Accordingly there will be no monetary prizes for the competition.

Jane Canfield will judge the exhibition at 3.30 p.m. on Friday October 11th, and the opening will be at 4.30 p.m. for 5 p.m. Paintings must be entered before 12 noon on the 11th.

Activities Diary

DATE	ACTIVITY	VENUE / CONTACT	BOOKINGS
Sep Tues 17th	Paint Together & Morning Cuppa No Oils	10am Wentworth Falls Country Club Social Membership \$15 pa	No
Sept Thurs 19th	MONTHLY MEETING Jody Graham Demonstration	1.00 pm St Bonaventure's Church Hall, Cnr Railway Pde & Hartley Esp. Leura	\$4 Members \$5 Visitors
Sept Thurs 26th	Plein Air Painting	10am Mount Tomah Botanical Garden	No
Oct 4th—13th	Spring Exhibition And Leura Garden Festival Plein-air	Leura Fairways and Open Gardens	
Oct Fri 11th	Leura Garden Festival Plein-air Official Opening 4.30 for 5pm	Painting delivered by 12 noon	
Oct Thurs 17th	MONTHLY MEETING Demonstration TBA	1.00 pm St Bonaventure's Church Hall, Cnr Railway Pde & Hartley Esp. Leura	\$4 Members \$5 Visitors
Oct Thurs 24th	Plein Air Painting	TBA	
Nov Sat 2nd	LEARNING WORKSHOP HELP WITH ALL MEDIA EXCEPT OILS	Wentworth Falls Country Club 10am til 4pm See Page 6 for details	\$30
Nov Thurs 7th	Paint Together & Morning Cuppa	10am St Andrews Presbyterian Church Hall Falls Rd Wentworth Falls	\$5
Nov Sat 16th	Art Display/Market	10am to 4pm Frazer Memorial Presbyterian Church Hall Macquarie Rd Springwood	\$10 per Table
Nov Thurs 21	Christmas Meeting Afternoon Tea Bring a Small Plate of Food to share Silent Auction included See Page 5 For Details 	1.00 pm St Bonaventure's Church Hall, Cnr Railway Pde & Hartley Esp. Leura 	\$4 Members \$5 Visitors
Nov Thurs 28th	Christmas Luncheon 	Wentworth Falls Country Club \$25 per head	Book & Pay By Oct Meeting

Leura Festival Gardens Plein-Air

The following dates have been confirmed for artists to visit Leura Festival Gardens for appraisal of painting sites prior to the Festival opening dates between 10am and 3pm unless otherwise stated.

Shenstone - 15 Craigend St. '(Noel Roscoe) Noel said he knows all the artists so they can just go in on any of the following dates - Mon 16/9, Wed 18/9, Fri 20/9, Mon 23/9, Tues 24/9, Wed 25/9, Fri 27/9, Mon 30/9.

Davaar—210 Megalong St. (Helen and Shane Caughey) - Mon 23rd Sept and Thurs 19th September

Rustlings - 39 Woodford St. (Claudia Fisk) - Thurs 19th September and Wed 18th Sept **Knock on Door on arrival**

Waldorf - 20-28 Fitzroy St. - Any of the dates listed for Shenstone but **please report to reception desk on arrival**

Dead End House - 32 Fitzroy St. (Dr Neal Blewett and Robert Brain) - Friday 20th Sept and Tues 24th Sept

Wai-ila - 111 Craigend St (June and Bill Avery) - Wednesday 18th September **only**

Everglades- Any of the dates listed for Shenstone at any time during opening hours but artists **please report to gatehouse on arrival.**

Tandella - 6 St Andrews Rd. (Bernard and Pierre) - Friday 27th Sept and Monday 30th September

Brabourne- 42 Woodford St. (Messrs M & P Fogarty) - Gardener will leave driveway gate open for artists between 10am and 3pm on Friday 27th and Mon 30th Sept.



Due to the reduction in number of Videos hired we have decided to offer them for sale.

They will be available for \$5 each at the meetings

The proceeds will be used to purchase additional DVDs and Books

DVDs do wear out with use so we charge a hire fee to be able to replace them when necessary and increase the items available for members' use.



**21th November
Meeting**

******* BRING A FRIEND *******

WHY— To Help raise funds for the Society

Did you realise that your Annual Subscription only covers the cost of our Public Liability, Volunteers Insurances and the production and mailing of the newsletter?

HOW DOES IT WORK?

Members donate a painting or paintings that they are willing to auction with proceeds to go the Society.

Paintings are displayed with a Bidding List attached

Interested bidders write in their name and a bid. Minimum bid of \$10 to start. If another person is interested they may up the bid.

When time is up the highest bid on each painting is the winner.

Members wishing to join the Web Gallery but have problems with photographing their Art Works HELP IS AVAILABLE
Contact a member of the Web Sub=Committee



Website Committee July 2013

Margaret Beal	4784 1963
Robyn Berglund	4782 5727
Fred Blakers	4787 5870
John Finnerty	4757 4324
Heather Skarratt	4784 1746

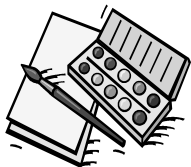


Any Ideas for suitable sites for future
plein-air days.

Thinking caps on please

????????????





LEARNING WORKSHOP
Wentworth Falls Country Club
Saturday 2nd November
10am till 4pm



Assistance will be given in all Media except oils

Bring a painting that you are working on Or bring a subject that you would like to start
Bring your own materials

Charge \$30 full payment when booking Maximum 16 artists

Bookings will not be refundable. If unable to come it will be your responsibility to find a replacement

Bookings at the Monthly Meetings

If Not Delivered Return to
Society of Mountain Artists Inc.
PO Box 76
Wentworth Falls 2782