



Society of Mountain Artists Inc.

Featuring the works of Artists from the Blue Mountains in New South Wales, Australia

Sep 2012

NEWSLETTER

Issue No 265

Mail P.O. Box 76 Wentworth Falls 2782—Email secretary@mountainartists.org
Meetings at St Bonaventure's Church Hall Cnr. Hartley Espl & Railway Pde. Leura
Website / Gallery www.mountainartists.org

Management Committee

PRESIDENT	Marie Morris	4787 1257	ORDINARY MEMBER	Dennis West	4757 3135
VICE-PRESENT	Peter Ayres	4758 9005	LIBRARIAN	Maunie Kwok	4757 3550
SECRETARY	Robyn Berglund	4782 5727	DEMONSTRATIONS	Anna Marshall	4784 1148
TREASURER	Ron Anderson	4757 2423	ORDINARY MEMBER	Patricia Carruthers	4758 7172
			ORDINARY MEMBER	Alfred Blakers	4787 5870

Patron: John Wilson FRAS

Membership / Web John Finnerty 4757 4324
Records jfynnerty@bigpond.com

Editor: Alfred (Fred) Blakers 4787 5870 alfieb@eftel.net.au
Articles required by 2nd Monday of month

Presidents Report

It is with great pleasure that I can verify that Fairways are going to store our screens for the foreseeable future. There will be a cost, but the space is very good and as we will probably have our Spring Exhibition there in the coming years to co-ordinate with the Leura Garden Festival it seems to be very convenient for those who set up the exhibition.

Our Annual Spring Exhibition planning is well underway and entries are flowing in. I hope that those who do not exhibit will feel welcome to help man the exhibition. Maunie who has been organising the Leura painting in the gardens is also being kept busy organising that, our thanks must go to Fred for doing the forms and tags for that part of our annual show.

We still would like more members to show their work on our website, keep it in mind.

We are to have our Christmas Lunch at Wentworth Falls Golf club, There will be a sheet on the table for those interested in going. It will be \$27.50.

On December 1st we are to have a day of demonstrating members work at Springwood Presbyterian Church Hall in Springwood. Members are encouraged to hire a table for \$10 to sell small works and cards. Payment is required at this meeting, no commission will be charged, there will be an advert. in the Blue Mountains Gazette.

Peter is organising the coach for our trip to the Toulouse Lautrec Exhibition in February. Members interested are urged to put their names down early, and to remember that it is a commitment to go. We will need deposits by November Meeting. We are looking for a member to take on the position of Social Secretary to follow up on trips, We also need someone to be a publicity officer for bringing the SMA before a wider audience. Dennis already does a stirring job advertising our Exhibitions as a member of the Exhibition Committee.

We wish to congratulate Dennis and Kay for their steadfastness in applying for Permanent residency, which has recently been granted.

I returned from our Annual holiday at Kandos, it was a very productive trip for those who went, the accommodation was beautifully renovated, the meals great, and we all came home with sides aching from the laughter we shared. Of course the weather was perfect if not a little cold in the mornings for the early risers.

Happy painting

Marie Morris



SPRING EXHIBITION

*Help Still Needed. To assist with exhibition expenses.
We ask local businesses to sponsor a screen at \$25 each.
If each member got ONE sponsor we would cover the cost
of the nine days hiring of Fairways*

More than one would be even better.

Dennis West is Co-ordinating so Businesses are not approached by more than one member

Let him know who YOU are asking

DATES TO NOTE Please assist those who do all the work by keeping to times

Spring Exhibition Paintings Delivery Friday 28th Sep (am to 10am (no later)
Collection Sunday 7th 3.30pm to 4.30pm (no earlier- no later)

Leura Garden Paintings Delivery Friday 1pm to 4.30pm
Collection Sunday 7th 3.30pm to 4.30pm (no earlier- no later)

Please keep to these times as setting up and judging all takes time and effort.
Also as we hire the premises we are required to vacate at agreed times.

Note for Exhibition Supervisors

There will be Paypal tuition on September 24 from 2 p.m. and September 25 from 9.30 a.m.
at 39 Yanko Avenue, Wentworth Falls.

Good News Item

The storage of our screens and exhibition equipment has been a continual problem. The use of the shed at Wentworth Falls has been increasingly under pressure from the Rural Fire Service to use the space..

The lengthy search was undertaken first by Peter Ayres as president and now by Marie Morris. To give members some idea of how difficult it has been. Inquiries were made at Council, Government Departments, Schools, members of Parliament, local organisations all to no avail. The possibility of hiring a private garage fell through. Marie had a meeting with the Mayor, no luck and then a breakthrough Leura Fairways has agreed to rent us a space in one of their garages.

Thankyou Marie and Peter for being so persistent.

Peter Ayres is investigating the possibility of a bus trip to the National Gallery in February next year to view the Toulouse Lautrec exhibition

These trips have been successful in the past. It does however require advance bookings at the Gallery and also Motel reservations.

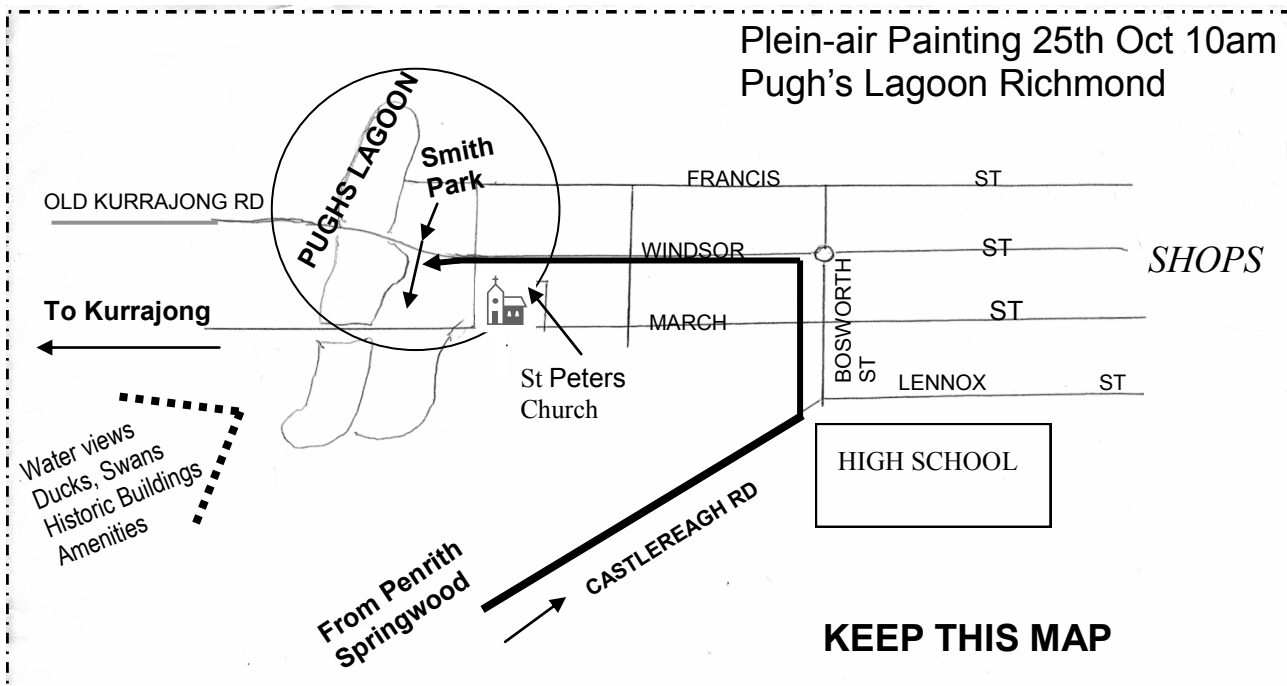
When members book and then drop out there are charges which may have to be met by the Society and other members.

Members need to understand that substantial deposits must be made, sometimes well in advance of some events, and are strictly non refundable.

In future where activities involve charges expressions of interest will require a deposit or full payment in advance.

Activities Diary

DATE	ACTIVITY	LOCATION	BOOKING
Sept Thurs 20th	MONTHLY MEETING Sketch Books and Discussion Demonstration of new Camera and Projection Equipment	1.00 pm St Bonaventure's Church Hall, Cnr Railway Pde & Hartley Esp. Leura	NO
Sept Fri 28th	Spring Art Exhibition Setup	Leura Fairways 19-21 Fitzroy St Leura	Check Entry Conditions
Sep Sat 29- Oct Sun 7th	Spring Art Exhibition Judge Joe Penn fras	Leura Fairways 19-21 Fitzroy St Leura	NO
Sep Sat 29- Oct Fri 5th	Plein-air Painting Competition Official Opening and Prize Awards 5pm Sat 6th	Leura Garden Festival Gardens Entry Forms and Conditions available at Sep Meeting or ring Fred Blakers 4787 5870	
Oct Tues 16th	Paint Together No Oils	10am Leura Golf Club Yearly Social Membership to Club Required \$10 1st July to 30th June	NO
Oct Thurs 18th	MONTHLY MEETING Demonstrator Mel Jones -Pochoir	1.00 pm St Bonaventure's Church Hall, Cnr Railway Pde & Hartley Esp. Leura	NO
Oct Thurs 25th	Plein Air Painting	10am Pugh's Lagoon Richmond Map Below	NO
Nov Thurs 1st	Paint Together & Morning Cuppa	10am St. Andrews Presbyterian Church Hall Falls Rd Wentworth Falls	\$5 donation
Nov Thurs 15th	MONTHLY MEETING Christmas Afternoon Tea Demonstrator Lea-ann Jones Watercolour/Mixed Media	1.00 pm St Bonaventure's Church Hall, Cnr Railway Pde & Hartley Esp. Leura Bring a Small Plate to Share	NO
Nov Tues 20th	Paint Together No Oils	10am Leura Golf Club Yearly Social Membership to Club Required \$10 1st July to 30th June	NO
Nov Thurs 22nd	Plein Air Painting	10am Hartley Historic Village	NO
Nov Thurs 29th	Christmas Dinner	Wentworth Falls Country Club \$27.50	YES
Dec Sat 1st	Display and sell your art works Market Day	Frazer Memorial Hall behind the Presbyterian Church in Springwood	YES



Leura Garden Festival Plein-air Painting Competition



*The Open garden festival will again be running from September Sat 29th to October Sun 7th
The Society has again been invited to participate with plein-air painting in the gardens during the festival .*

*The paintings must be substantively done in the gardens during the festival.
Painting Days **Sat Sep 29th to Fri Oct 5th***

*The completed works are then entered and judged at Leura Fairways
Open for last weekend of the Spring Exhibition .*

Full details and Applications will be available at the September monthly meeting
or by contacting Fred Blakers on 4787 5870

**Application forms will not be in the newsletter
to avoid confusion with the Society's Spring Exhibition which will be available at the same time**

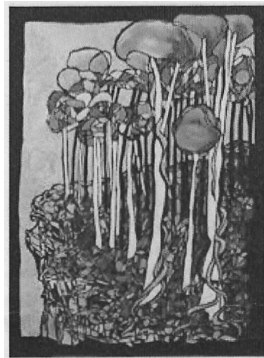
October 18th Meeting Demonstrator **Mel Jones**

Mel is a local artist recognized for her natural talent with Pochoir. A French hand cut stenciling technique characterized by crisp lines and brilliant palettes. Mel combines this bold technique with mixed media elements to produce unique vibrant landscapes of mountain gully Blue and Grey Gums.

Studying fine arts in the 1990s Mel has exhibited in group and solo shows throughout the Blue Mountains as well as at the Royal Botanic Garden, Sydney.

Mel has been a finalist in the Westmead Art Competition sponsored by the Arab Bank Australia. After successfully completing a number of commissions earlier this year, along with exhibition bookings well into 2011, Mel Jones is becoming a highly sought after inspired artist.

During her 12 months residency, Mel aimed to develop her technique and style to successfully interpret the seasonal wonders and changes that occurred in the Garden. She produced exhibitions, journals and provided workshops for visitors and a blog to keep us informed of her journey.



Exhibition at Everglades Garden

When four professional artists who reside in the Blue Mountains were invited to give their own unique visual representations of the Everglades Gardens they decided to stage an exhibition of painting and mixed media together in a show that takes part in three stages between the 8th September and 28th October In The Everglade's Gallery.

The four artists are- **Tim Allen, Michael Herron, Leo Robba and Rhett Brewer**. They are all Sydney based but have exhibited their work widely across Australia and examples can be found in many public and private collections. Each artist has their own way of seeing and painting a landscape, whether it be the wild rugged beauty of the Flinders Ranges where they travelled and worked together earlier this year, or in this case, the beautifully planned combination of man made order and the random patterns of nature that is Paul Sorenson's Everglades garden.

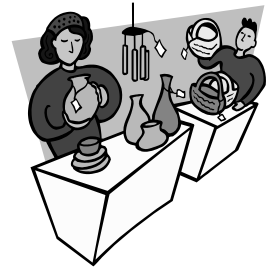
The Artist will be there for presentations and events on Saturday 29th September and 6th October.

DISPLAY AND SELL

Here is a chance to display and sell your art works

The Society has booked for a display and sell market
on Saturday 1st December

Organised at the Frazer Memorial Hall
behind the Presbyterian Church in Springwood.



Members to manage and market their own work. Table for hire \$10
NO Commission payable.



Set up a table and to display of your work.

Paintings *****Cards *****Etc

Pay \$10 and book a space at the September and /or October Meetings.

Take the opportunity to paint or draw for visitors to see how its done
while selling your work

EXHIBITION

SMA Member Margaret Aalders is having an Exhibition of new works.

Eclectic

*At Blackheath Gallery 42 Govetts Leap Rd Blackheath
Open 10am—5pm Friday to Sunday and Public Holidays*

Exhibition runs through to 4th November

Our August 16th meeting welcomed a Demonstration by the Springwood artist Leo Robba .

As well as being an artist Leo is a keen gardener, having 2 acres of garden himself and it is his love of gardens that has led him to study at present, through the National University, Canberra, a Phd in Fine Art, entitled 'The Artists Garden' and 'Humanising the Landscape' This follows earlier studies in Queensland where Leo originates and a Masters Degree in Fine Art at Newcastle University. His first professional success was at the age of 7, he said, when he exhibited a painting and received 20 cents in payment! (Great oaks from little acorns grow!)

Leo has painted in different media but now tends to concentrate on oil paints, some acrylics, and painting for the most part, en plein air. He doesn't usually do an underpainting and can finish quite a large painting, a garden scene, in as little as six hours. (A light groan of envy rippled through the listeners at this point!). is love of gardens, and what people have done over the ages to create them continues to fascinate Leo and he predominately paints garden scenes; informal such as his own at home and the more formal, Everglades, Leura. He paints what he sees but also succeeds at infusing a spiritual feel to the scene, using deep shadows as a subject in themselves. This can create an enigmatic scene which invites the viewer to enter and explore that space.

Interestingly, although Leo's paintings on the whole are large, he used a small filbert brush and keeps his paint fairly 'dry' to sketch in his initial shapes, breaking the scene down into shapes and forms, using pure paint on the white ground. Turps is usually kept only for cleaning brushes. As he said at the demonstration, 'You don't need to go far, your own garden, or a landscape you enjoy, these are ready and waiting for us to paint on paper or canvas'.

Unfortunately time was of the essence, we would have listened to more as Leo has a common-sense yet creative approach to the art work he does, achieving a lot in a short time. It was very apt that two of his paintings have been chosen for the exhibition to open Katoomba's new Cultural Centre building in November. I'm sure many of us will not miss that. He also has a solo exhibition coming up at the Everglades old squash court, which will no doubt contain paintings of that lovely garden and grounds

Leo was thanked by President Marie, on behalf of us all, for a very informative and entertaining talk and demonstration

Mave Roberts.



WELCOME TO OUR NEW MEMBERS

Olivia Sperzel of North Katoomba
Elizabeth Connor, Leura.



If Not Delivered Return to
Society of Mountain Artists Inc.
PO Box 76
Wentworth Falls 2782