



# Society of Mountain Artists Inc.

Featuring the works of Artists from the Blue Mountains in New South Wales, Australia

Aug 2012

## NEWSLETTER

Issue No 264

Mail P.O. Box 76 Wentworth Falls 2782—Email [secretary@mountainartists.org](mailto:secretary@mountainartists.org)  
Meetings at St Bonaventure's Church Hall Cnr. Hartley Espl & Railway Pde. Leura  
Website / Gallery [www.mountainartists.org](http://www.mountainartists.org)

### Management Committee

PRESIDENT	Marie Morris	4787 1257	ORDINARY MEMBER	Dennis West	4757 3135
VICE-PRESENT	Peter Ayres	4758 9005	LIBRARIAN	Maunie Kwok	4757 3550
SECRETARY	Robyn Berglund	4782 5727	DEMONSTRATIONS	Anna Marshall	4784 1148
TREASURER	Ron Anderson	4757 2423	ORDINARY MEMBER	Patricia Carruthers	4758 7172
			ORDINARY MEMBER	Alfred Blakers	4787 5870

### Patron: John Wilson FRAS

Membership / Web John Finnerty 4757 4324  
Records jsfinnerty@bigpond.com

Editor: Alfred (Fred) Blakers 4787 5870 [alfieb@efel.net.au](mailto:alfieb@efel.net.au)  
Articles required by 2nd Monday of month

## Presidents Report

Our annual holiday at Kandos in the second week in September has been booked.

I have had varying comments about our luncheon although all said it was a beautiful setting.

I have had a meeting with the mayor Daniel Myles about the storage of our exhibition screens, so far it has not been very helpful, he said we could put in a submission to put a container at the off dog leash area at Lawson, I have since suggested Browns Oval, at Mount Victoria, I haven't had a reply as yet, He also suggested Blackheath Art Society, I see a problem with this as the parking space for Margaret's truck would be a problem as they would be setting up at the same time in October. If anyone in the society has an idea on what we can do I would be most happy to receive them.

With regards to our demonstration projector, it has now been ordered and we look forward to having the benefit of it at our meetings. Hopefully in September.

We have booked the Katoomba golf Club venue for Beth Burgess's farewell afternoon tea, would members put their names down on the tabled sheet please and pay the charge if possible

If members want to have a Melbourne Cup Luncheon at a member's house we would like someone to put their hand up. We didn't have one last year and wonder if members are still interested The numbers the previous year held in the home of Marlene Strathee were poor and as it is no mean feat to prepare for members to turn up I am asking members if they really want one.

I visited Cockatoo Island to see the Biennale there, it was most enjoyable with many ideas coming with seeing these very contemporary ideas, I am looking forward to visiting the MCA to see the works there before it closes in September anyone interested in joining me just let me know..

There is to be an exhibition of Toulouse Lautrec at the National Gallery beginning in December and continuing during the summer months, we are looking to hiring the community bus and going down there after the Christmas school holidays. If members would let me know if they are interested.

The Creative Arts Centre at Glenbrook has given us an invitation to their upcoming exhibition on 1<sup>st</sup> and 2<sup>nd</sup> September, I have reciprocated by giving them an invitation to our Spring exhibition, This is a sign that our website is being looked at by different groups.

Happy painting

*Marie Morris*

**SPRING EXHIBITION**  
**Main Raffle Prize Jamison Award Painting Noel's Place by Peter Ayres**



At the Autumn Exhibition  
a **daily** bonus raffle prize was drawn with all tickets going in final draw.



**To implement this for Spring Exhibition**  
**members who are willing to give a small (about postcard size) painting**  
**are asked to speak to the Exhibition Sub-committee**

**Help Needed. To assist with exhibition expenses.**  
**We ask local businesses to sponsor a screen at \$25 each.**  
**We will also offer to advertise all sponsors in our Newsletter**  
**If each member got ONE sponsor we would cover the cost**

**EXHIBITION NEWS**

**Body and Soul Life Drawing and Painting Exhibition, Glenbrook**

**The Blue Mountains Creative Art Society** situated at Glenbrook. Is holding its annual exhibition as titled above with the official opening on Friday 31st August commencing at 7pm to 9pm and over the weekend 1 to 2 September, 10am to 4pm.

The venue is the side room in the Glenbrook Theatre building on the Great Western Highway at Glenbrook.

With a previous Monday being too wet to go bushwalking Ed and I took the train to the city and went to the Maritime Museum, Darling Harbour. Always an interesting place to visit, this time it was to see **Wendy Sharpe's new exhibition of her paintings created aboard the Australian Antarctic Vessel 'Aurora Australis'**. She spent six weeks on board working on an exhibition of over a hundred paintings.

She was told to 'take plenty of white' paint but in fact was struck by the many different colours to be seen in Antarctica. The vivid auroras reflected in the dark ocean and bouncing off ice-bergs. Huge walls of ice an iridescent green, glistening in the moon and star-light and great flat plains of snow dotted with penguins, curious about the huge great vivid red bulk of the ship. There are paintings too of the ship's interior and personnel, so creating a visual document of the work carried out by those on board.

The proceeds from her exhibition sales all go to the Mawson's Huts Foundation, to preserve and protect this important era in Australian Antarctic Exploration.

Mavis Roberts.

**September 20th Meeting**

**Art Journals and Sketch Books.**  
**and the Demonstration of our new Camera and Projection Equipment**

**Members are invited to bring art journals and sketch books to display and share**  
**after an introduction by Bev Plaizier**

Bev will give a short introduction about the value of Sketch Books and Art Journals. Bev has studied at TAFE and UTS gaining certificates in Art and Welfare and later a Bachelor of Adult Education (Community) as a mature aged student. She enjoys pastels and collage. She has gained much from the exchange of ideas in the Arts Society and through summer schools.

This will be a good opportunity to learn from the many gifted artists in our Arts Society. You can gain tips and techniques from the display of art journals and sketch books of members. Sketching in different ways can be an important part of one's art learning and a way of expanding your skills.

Members who wish will have examples of their Work projected on a screen and be able to make their own relevant comments. This will be a trial for our new projection system.

# Activities Diary

DATE	ACTIVITY	LOCATION	BOOKING
<b>Aug</b> Thurs 16th	<b>MONTHLY MEETING</b> Leo Robba Demonstration	1.00 pm St Bonaventure's Church Hall, Cnr Railway Pde & Hartley Esp. Leura	NO
<b>Aug</b> Tues 21st	<b>Paint Together</b> <b>No Oils</b>	<b>10am Leura Golf Club</b> Yearly Social Membership to Club Required \$10 1st July to 30th June	NO
<b>Aug</b> Thurs 23rd	<b>Beth Burgess Farewell</b> <b>Afternoon Tea</b>	2pm Katoomba Golf Club	YES
<b>Sept</b> Thurs 6th	<b>Paint Together &amp; Morning Cuppa</b>	10am St. Andrews Presbyterian Church Hall Falls Rd Wentworth Falls	\$5 donation
<b>Sept</b> Mon 10– Fri 14	<b>Annual Holiday</b>	<b>Railway Hotel Kandos</b>	
<b>Sept</b> Fri 14th	<b>Spring Art Exhibition</b> <b>ENTRY FORMS DUE</b>	<b>Last Day No Late Entries Accepted</b>	
<b>Sept</b> Sat 15th	<b>Plein-air Painters'</b> <b>Viewing of Festival Gardens</b>	Leura Festival Gardens 10am-12noon	Must wear Name Badge
<b>Sept</b> Tues 18th	<b>Paint Together</b> <b>No Oils</b>	<b>10am Leura Golf Club</b> Yearly Social Membership to Club Required \$10 1st July to 30th June	NO
<b>Sept</b> Wed 19th	<b>Plein-air Painters'</b> <b>Viewing of Festival Gardens</b>	Leura Festival Gardens 10am-12noon	Must wear Name Badge
<b>Sept</b> Thurs 20th	<b>MONTHLY MEETING</b> Sketch Books and Discussion Demonstration of new Camera and Projection Equipment	1.00 pm St Bonaventure's Church Hall, Cnr Railway Pde & Hartley Esp. Leura <b>See Details Page 2</b>	NO
<b>Sept</b> Fri 28th	<b>Spring Art Exhibition</b> <b>Setup</b>	Leura Fairways 19-21 Fitzroy St Leura	Check Entry Conditions
<b>Sep Sat 29- Oct Sun 7th</b>	<b>Spring Art Exhibition</b> <b>Judge Joe Penn fras</b>	Leura Fairways 19-21 Fitzroy St Leura	NO
<b>Sep Sat 29- Oct Fri 5th</b>	<b>Plein-air Painting Competition</b> <b>Official Opening and Prize Awards 5pm Sat 6th</b>	<b>Leura Garden Festival Gardens</b> <b>Entry Forms and Conditions available at</b> <b>Aug Meeting or ring Fred Blakers 4787 5870</b>	
<b>Oct</b> Tues 16th	<b>Paint Together</b> <b>No Oils</b>	<b>10am Leura Golf Club</b> Yearly Social Membership to Club Required \$10 1st July to 30th June	NO
<b>Oct</b> Thurs 18th	<b>MONTHLY MEETING</b> Demonstrator Mel Jones -Pochoir	1.00 pm St Bonaventure's Church Hall, Cnr Railway Pde & Hartley Esp. Leura	NO
<b>Oct</b> Thurs 25th	<b>Plein Air Painting</b>	10am Pugh's Lagoon Richmond	NO
<b>Nov</b> Thurs 1st	<b>Paint Together &amp; Morning Cuppa</b>	10am St. Andrews Presbyterian Church Hall Falls Rd Wentworth Falls	\$5 donation
<b>Nov</b> Tues 6th	<b>Melbourne Cup</b>	Any Ideas / Any Offers????	
<b>Nov</b> Thurs 15th	<b>MONTHLY MEETING Christmas Afternoon Tea</b> Demonstrator Lea-ann Jones Watercolour/Mixed Media	1.00 pm St Bonaventure's Church Hall, Cnr Railway Pde & Hartley Esp. Leura <b>Bring a Small Plate to Share</b>	NO
<b>Nov</b> Tues 20th	<b>Paint Together</b> <b>No Oils</b>	<b>10am Leura Golf Club</b> Yearly Social Membership to Club Required \$10 1st July to 30th June	NO
<b>Nov</b>	<b>Christmas Dinner</b>	<b>Still being finalised</b>	Suggestions?

## Leura Garden Festival Plein-air Painting Competition



*The Open garden festival will again be running from  
September Sat 29th to October Sun 7th*

*The Society has again been invited to participate with plein-air painting in the gardens during the festival .*

*The paintings must be substantively done in the gardens during the festival.  
Painting Days Sat Sep 29th to Fri Oct 5th*

*The completed works are then entered and judged  
At Leura Fairways Open for last weekend of the Spring Exhibition .  
Full details and Applications will be available at the August monthly meeting  
or by contacting Fred Blakers on 4787 5870*

***Application forms will not be in the newsletter  
to avoid confusion with the Society's Spring Exhibition***

### **David Newman-White Demonstration**

For our June meeting we were visited by the portrait artist David Newman-White who brought along several paintings to illustrate his talk before demonstrating one technique of drawing in charcoal in a continuous line, forming circles and gradually making the form of a male face.

He also used a very thick piece of charcoal to do broader marks, filling in background and giving the emerging drawing form and depth. As we watched the face took on a much more human appearance as David colour-washed over it with a sepia tone of watercolour. To this he added small high-lights of colour, very subtly added to eyes, nose and mouth, creating a very realistic skin tone on the drawing.

David prefers to draw male heads, finding them, especially the older male, very interesting as there are so many colours, he pointed out, than you are at first aware. He also uses pastels to achieve this many-layered effect. To quote David, "Put on some loud music and draw fast and draw hard." His favoured paper is one called Stone Henge, a tough and heavy watercolour paper capable of vigorous handling and application of materials. He will also use tinted paper or advises toning the paper before commencing on the work.

David and his artist/musician/photographer wife are in the process of moving but are based in Lithgow. David commutes to work in Sydney's Nepean Art and Design Centre where he tutors in Fine Art to Diploma and Degree level. Watching his human head drawing come together so effortlessly it's as well to remember his advice, "Knit a drawing together, draw spheres for the head and face in a loose, continuous line, nice big loose lines. Don't be too shy, don't 'map' the drawing, keep the hand moving on the paper and let the drawing emerge."



### **Jamison Award**



Members voted for the Jamison Award at the July Meeting .

Peter Ayres Watercolour Painting called "Noel's Place" was the winning work.

Congratulations Peter

**GO ON LINE AND CHECK OUT OUR  
NEW WEBSITE  
JOIN THE ONLINE GALLERY  
[www.mountainartists.org](http://www.mountainartists.org)**



# Society of Mountain Artists - Spring Exhibition 2012

Friday September 28th to Sunday October 7th,

LEURA FAIRWAYS, 19-21 Fitzroy Street, Leura



Name: (Mr/Mrs/Ms/Miss) \_\_\_\_\_

Address: \_\_\_\_\_ Phone: \_\_\_\_\_

Post Code: \_\_\_\_\_

	FILL IN TITLE, Section, Medium, Price (ONLY) – 30 Block Letters (one per square, include spaces)																														Medium	Section	Price
1. TITLE																																	\$
2. TITLE																																	\$
3. TITLE																																	\$
4. TITLE																																	\$
5. TITLE																																	\$

PAINTINGS MAY ONLY BE REMOVED FROM THE SCREENS BY COMMITTEE MEMBERS

ROSTER AND CARD ENTRIES OVER THE PAGE



# SPRING EXHIBITION 2012



## HAND CRAFTED ORIGINAL CARDS

Hand crafted original cards (Exhibitors only), limit 30 per exhibitor. <b>EACH CARD MUST BE NUMBERED, WITH INITIALS, ON THE FRONT</b>	Price per card (in whole dollars) »
--	-------------------------------------

## IMPORTANT -- YOU ARE REQUIRED TO COMPLETE ROSTER

I accept all conditions of entry.

Signature: \_\_\_\_\_

I hereby authorise \_\_\_\_\_ to collect my artwork(s)

Sign-out: \_\_\_\_\_

ABN Number

HOBBYIST  
Please Tick ☒

YES

NO

**NOTE: Entry of greater than two paintings requires that you do two roster sessions.**

COMPLETE ROSTER TIMES BELOW or Record OTHER DUTIES here, as negotiated with the exhibition committee »

Friday 28 <sup>th</sup> Sept	Tick ✓	Saturday 29 <sup>th</sup> Sept	Tick ✓	Sunday 30 <sup>th</sup> Sept	Tick ✓	Monday 1 <sup>st</sup> Oct	Tick ✓	Tuesday 2 <sup>nd</sup> Oct	Tick ✓	Wednesday 3 <sup>rd</sup> Oct	Tick ✓	Thursday 4 <sup>th</sup> Oct	Tick ✓	Friday 5 <sup>th</sup> Oct	Tick ✓	Saturday 6 <sup>th</sup> Oct	Tick ✓	Sunday 7 <sup>th</sup> Oct	Tick ✓
COMMITTEE Only		10.00 am To 1.00 pm		10.00 am To 1.00 pm		10.00 am To 1.00 pm		10.00 am To 1.00 pm		10.00 am To 1.00 pm		10.00 am To 1.00 pm		10.00 am To 1.00 pm		10.00 am To 1.00 pm		10.00 am To 1.00 pm	
COMMITTEE Only		1.00pm to 4.00 pm		1.00pm To 4.00 pm		1.00pm To 4.00 pm		1.00pm To 4.00 pm		1.00pm To 4.00 pm		1.00pm To 4.00 pm		1.00pm To 4.00 pm		1.00pm To 4.00 pm		COMMITTEE ONLY	

SEE CONDITIONS for detailed description of each section. PLEASE READ CAREFULLY





## Spring 2012 Art Exhibition - Conditions of Entry

Friday 28<sup>th</sup> September to Sunday 7<sup>th</sup> October

Leura Fairways -- 19-21 Fitzroy Street, Leura

Entries Close: Friday 14<sup>th</sup> September - no late entries accepted  
Send to: SMA, PO Box 76, Wentworth Falls, 2782  
Entry Fee: \$5.00 per artwork - payable on delivery  
Delivery: Leura Fairways Friday 28<sup>th</sup> September, 9.00am to 10.00am (NO LATER)  
Collection: Sunday 7<sup>th</sup> October, 3.30pm to 4.30pm (NO EARLIER)

During the exhibition  
contact the SMA  
by phone  
**0488-264-670**

**PAINTINGS MAY ONLY BE REMOVED FROM THE SCREENS BY COMMITTEE MEMBERS**

Commission: 25% commission on all sales

### SECTIONS:

- 1) Oil & Acrylic Any Support
- 2) Watercolour Includes Gouache (no pen work)
- 3) Works on Paper Pastel / Pen / Pen & Wash / Pencil / Mixed Media / Hand Pulled Prints
- 4) Small Paintings Up to 50" (127cm) OUTSIDE DIMENSIONS (PERIMETER) - Any Medium
- 5) Contemporary Non-traditional, innovative and new techniques (any medium)  
No Computer or Photographic imaging

### CONDITIONS

**PLEASE READ ALL CONDITIONS CAREFULLY**

Open to financial SMA members.

Maximum number of paintings = Five (5)

Maximum **OUTSIDE** dimensions (perimeter) of frame - ONE at 330cm (130"), plus four at 254cm (100").  
**OR** five at any size **UP TO** 254cm (100")

Artworks must be presented to a high standard:

- \* For **FRAMED** works: Ready to hang, preferably with cord or wire and strong staples or "D" rings.
- Or
- \* For **STRETCHED UNFRAMED CANVASSES**: No visible staples on sides, with all edges painted, also ready to hang with cord or wire and strong staples or "D" rings.
- \* **All Works**: No screw eyes or protrusions which can damage other exhibits. No wet paintings, no infringement of copyright (e.g. other artists' work, photographs from calendars, Readers Digest, Australiana, books etc.).

Works must have been completed within last two years

Works *not* previously exhibited in SMA exhibitions

Works on SMA website may not be exhibited.

### OFFICIAL OPENING AND AWARD PRESENTATION

Saturday 29<sup>th</sup> September, 10.30am for 11am

All works must be for sale. Prices not negotiable.

Works delivered must be as per Entry Form. **NO SUBSTITUTIONS WILL BE ACCEPTED.**

**THE ARTISTS NAME AND THE TITLE, PRICE AND MEDIUM MUST BE CLEARLY DISPLAYED ON THE BACK OF THE ARTWORK, AND MUST AGREE WITH INFORMATION ON THE ENTRY FORM, INCLUDING SECTION.**

The SMA has the right to reject works.

Exhibitors must arrange their own insurance. No responsibility can be taken by the SMA or Leura Fairways for damage or loss incurred.

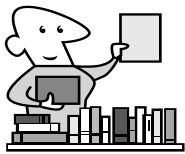
**Publicity:** The Society may allow works on display to be reproduced by newspapers or TV during the exhibition period.

During the exhibition, if sales leave gaps on the screens, the Supervisor may ask an artist, whose painting has sold, to enter another. A \$5 fee will be charged, payable to the Supervisor.

In order to exhibit, members are required to assist in manning the exhibition. **PLEASE INDICATE PREFERRED DUTY DAYS ON REVERSE SIDE OF ENTRY FORM.** It is the exhibitor's responsibility to obtain a substitute if unable to attend at the nominated time.

**PAINTINGS MAY ONLY BE REMOVED FROM THE SCREENS BY COMMITTEE MEMBERS**

**KEEP THIS PAGE**



LIBRARY

### ***Some New Attractions***

Painting People (Watercolour)	Michael Otis
Creative Acrylic Landscape	Wendy Jelbert
Painting Water in Watercolour	Christian Wharton

### **WELCOME TO OUR NEW MEMBERS**

Madeline Coelho	Springwood
Rhonda Keir	Katoomba



If Not Delivered Return to  
Society of Mountain Artists Inc.  
PO Box 76  
Wentworth Falls 2782